

Unveiling the invisible

A mathematical touch to challenges in Cultural Heritage

Simone Parisotto (Fitzwilliam Museum - DAMTP, University of Cambridge, Cambridge, United Kingdom)

The MACH group: who we are

We are a brand new **Cambridge-based research group** with interdisciplinary skills from:

- the Cambridge Image Analysis (Prof C.-B. Schönlieb, Dr K. Targonska-Hadzibabic, Mr S. Parisotto);
- the Fitzwilliam Museum (Dr S. Panayotova, Dr J. Vine);
- the Faculty of Classics (Dr A. Launaro, Ms N. Leone);
- the Hamilton Kerr Institute (Dr S. Bucklow).

Aim for 2019-2021

Use mathematical image analysis methods mainly developed for medicine-related challenges to process digital collections in the arts and humanities.

Overview of the challenges

Illuminated Manuscripts



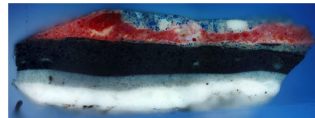
- defect identification;
- virtual inpainting;
- multi-modal data fusion.

Coarseware Roman pottery



- partial shape features;
- clustering;
- re-think old catalogues.

Cross-section of paintings



- complex-shape detection;
- texture analysis;
- layer classification.

To touch or not to touch?

Virtual restorations as new **tactile** experience!



Photo by Erik Schepers.



To touch or not to touch?

Virtual restorations as new **tactile** experience!



Photo by Erik Schepers.



...stay in touch with us!



<https://mach.maths.cam.ac.uk>



<https://twitter.com/MACHcamb>

